

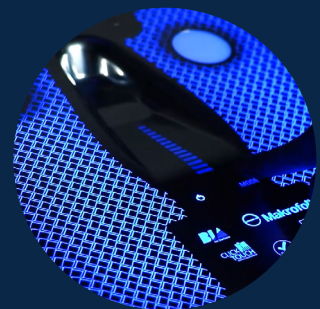
# CLICK TOUCH

Your HMI solution provider

## UniCTouch

Universal capacitive Technology

- Capacitive detection through any overlay
- Freedom in design
- Innovative touch on metal



UniCTouch® or Universal Capacitive Touch stands for capacitive operation (keys, slider, wheel functions and touchpad) through every conceivable type of overlay and top layer: metal, stainless steel, wood, cork, gold, glass ... 'Universal capacitive touch' indicates that the customer has complete freedom of design and can bring a highly innovative product to the market.

### The uniCTouch® principle

A capacitive system detects movement of the overlay as the distance between the two electrodes becomes smaller. This results in an increase in capacity. We can change the actuation force by playing with the mechanical design and software.

### Simple integration and user-friendly electronics

UniCTouch® is based on a flexible foil which makes the integration very easy. The foil is laminated directly to the front layer. You do not need to worry about the distance and integration, the positioning is not critical. ClickTouch offers all the needed support for the integration and custom programming of the touch screen controller. Our construction also guarantees an optimal operation in conjunction with EMI/EMC. Furthermore a force controlled signal is possible.

### Stylish appearance

Metal and stainless steel are already widely used in your products. UniCTouch® enables you to extend metal surfaces to the control interface. Different input types are possible: keys, sliders, wheel and touchpad. **The design options are limitless!**

### Backlighting

The electrodes of the uniCTouch® are so unique that they can be translucent. This stylish feature makes backlighting an option.

